

# ARGUS<sup>®</sup> 42 BASIC

A D S L T E S T E R



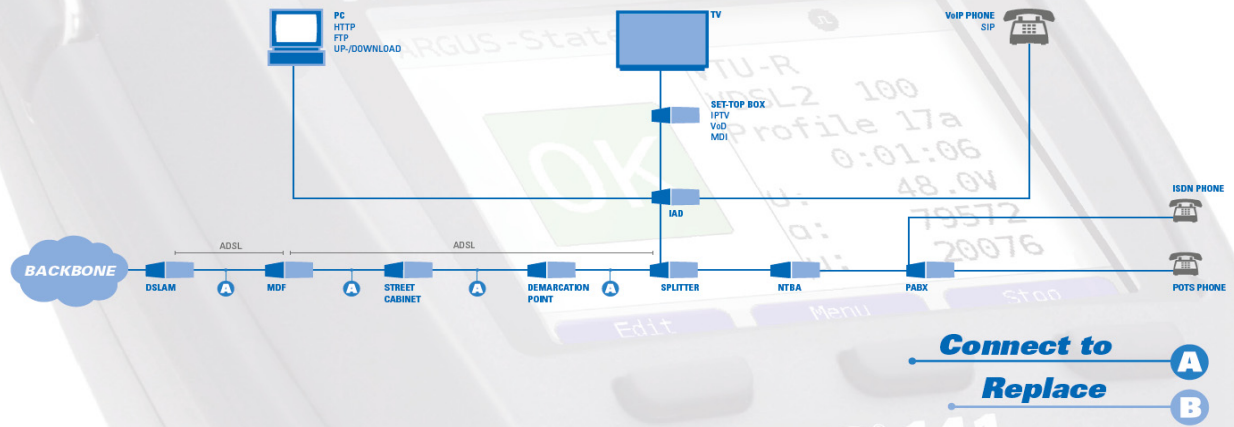
**ADSL**

**PC**

**intec**

GESELLSCHAFT FÜR  
INFORMATIONSTECHNIK mbH

## Where to use the ARGUS?



### The ADSL Tester

Easy entry into the world of ADSL measurement technology: the inexpensive ARGUS® 42<sup>BASIC</sup> ADSL Tester offers impressive features such as quick availability and user-friendly testing of ADSL over POTS and ADSL over ISDN. The device is supplied with an IP ping function by default. The checker can optionally support a passive bridge mode.

Thanks to its easy handling, the ADSL Tester requires only few prior knowledge. A menu is not necessary since all of the functions and tests can be quickly selected and started by pressing a softkey. The most important measurement results such as the up- and downstream data rates of the loop are displayed automatically. The handheld tester can also be configured easily via the PC software WINplus.

### Easy operation

The ARGUS® 42<sup>BASIC</sup> is remarkably user-friendly thanks to its quick availability. This handy tester weighs just 395 g and offers long operating times of several hours.

### Single-source quality

At intec, the entire core know-how is concentrated at one location – from software and hardware development to marketing, sales and service. As a result, we can react to our customers' wishes and suggestions in the shortest possible time and thus offer products that are exactly tailored to suit user requirements.

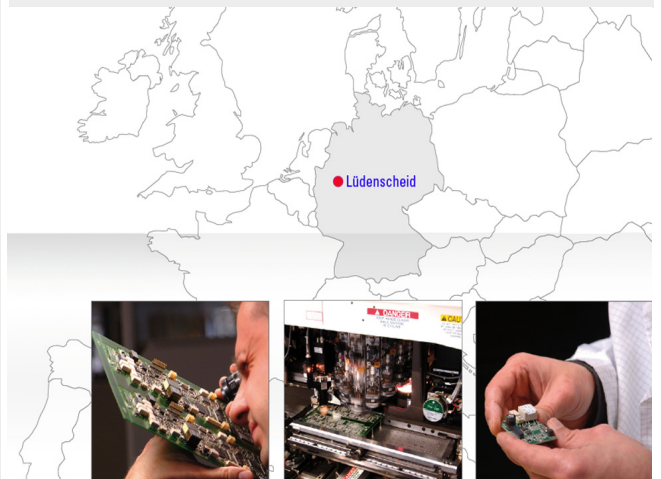
The equipment is also manufactured (under our control) in Germany. To maintain the high quality of all our ARGUS testers, we use the most modern processes and have implemented a DIN EN ISO 9001 certified quality management system. Furthermore, we test all of our equipment in our own in-house calibration laboratory. Moreover, each individual tester must pass an automatic optical inspection (AOI) as part of the production process. The result: first-class products "Made in Germany".

### intec Gesellschaft für Informationstechnik

With more than 20 years of experience, intec GmbH is one of the leading suppliers of xDSL, ISDN and IP measurement technology in Europe. With the ARGUS range, intec is offering practical solutions for installation and troubleshooting of xDSL and ISDN connections.

Developed specifically for the needs and daily use by technicians working for international network operators, service providers and installation companies.

More than 60 000 ARGUS testers are already in the field with companies such as Deutsche Telekom, Vodafone, Telefonica, KPN, British Telecom and Telekom Austria who are completely satisfied in the quality of "Made in Germany" intec products.



## ADSL Tester

ARGUS® 42<sup>BASIC</sup> allows a pass/fail evaluation of the ADSL service, additionally it supports the ADSL modem emulation and does tests on layer 3.

### Broadband interfaces:

- Synchronisation with DSLAM (ATU-C) and evaluation of all relevant connection parameters and error counters
- Inclusive bridge mode

### • ADSL2/2+ and ADSL modem simulation, ATU-R

- Shows Bits, SNR and QLN/tone graphs
- Standards supported:
  - ITU-T G.992.1, Annex A (ADSL, G.DMT)
  - ITU-T G.992.2, Annex A (G.lite)
  - ITU-T G.992.3, Annex A (ADSL2, G.DMT.bis)
  - ITU-T G.992.5, Annex A (ADSL2+)
  - ITU-T G.992.1, Annex B (ADSL, G.DMT)
  - ITU-T G.992.3, Annex B (ADSL2, G.DMT.bis)
  - ITU-T G.992.5, Annex B (ADSL2+)
  - ITU-T G.992.3, Annex J (ADSL2)
  - ITU-T G.992.5, Annex J (ADSL2+)
  - ITU-T G.992.3, Annex M (ADSL2)
  - ITU-T G.992.5, Annex M (ADSL2+)
  - ITU-T G.992.3, Annex L
  - ANSI T1.413 (ADSL)
  - ETSI TS 101 388 Annex C
- Automatically measures and displays the following upstream and downstream parameters of the line:
  - Maximum ATM bitrates in kbit/s
  - Fast or interleaved ATM bitrate (Latency Mode)
  - Attainable ATM bitrate (maximum) in kbit/s
  - Relative Capacity (Utilization of the line in %)
  - Line's attenuation in dB
  - Output power in dBm
  - Signal-to-noise margin (SNR margin)
  - Interleave Depth
  - FEC-, CRC- und HEC-Error counter
  - Number of Resyncs
  - Manufacturer of the ATU-C (Vendor far)
  - SW-Version at the ATU-C (DSLAM) (Vendor Version)

### • ADSL Ethernet bridge mode

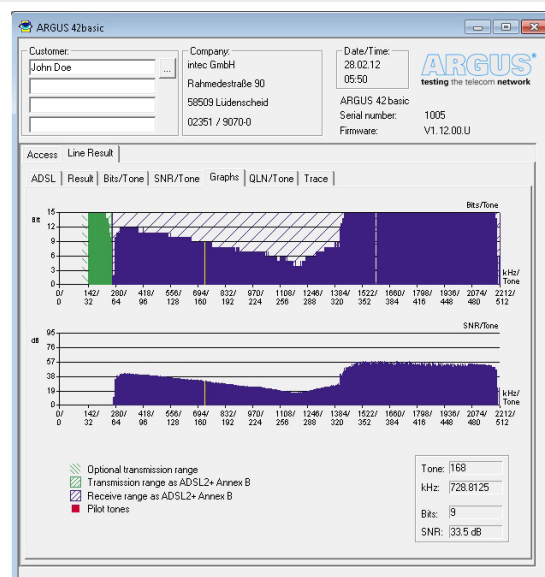
- 10/100 Base-T Ethernet interface
- ADSL modem through mode (bridge mode)

### Data testing via ADSL:

- **ATM layer** tests when using ADSL, ADSL2/2+
  - ATM cell and bit error statistics (upstream/downstream):
    - CRC (Cyclic Redundancy Check)
    - FEC (Forward Error Correction)
    - HEC (Header Error Checksum)
- **Data:**
  - PPP login (BRAS infos and PPP trace)
  - Ping test (Number of pings, Delay, Packet size, Fragmentation)

Display of Nummber of packets sent/receive, packets sent again, checksum errors, faulty packets received, packet round-trip (min., max., avg.), assigned WAN IP, statistics, etc.

  - Data Log: send a trace file to a PC (\*.pcap, Wireshark)



### Configurations

- ADSL settings: ADSL mode (Annex A, B, J, M)
- Rated values for OK/Fail evaluation
- Protocol: PPPoE, PPPoA, EoA, IPoA
- ATM settings: VPI/VCI, Encapsulation
- MAC: static or dynamic MAC address
- VLAN settings: Use VLAN + VLAN ID
- PPP settings: User name + Password etc.
- IP settings: DHCP client or static IP, local IP adresse, Gateway IP, DNS Server
- DHCP client: Timeout, Vendor IP/info, User class, User-def.
- Autonegotiation: Speed, Duplex mode, flow control

### Documentation and Analysis:

- **Update Tool** for free firmware updates
- **Documentation** of all parameters recorded to test reports (in device and on PC) via automatic access tests
- **Data transfer** to PC via serial interface
- **WINplus** PC software for generating, saving, archiving and printing test reports and for configuring the ARGUS

### Further highlights:

- Lightweight, compact and easy to use, all functions integrated
- Intuitive menu navigation and instant readiness for operation
- Free firm- and software updates via [www.argus.info/en](http://www.argus.info/en)
- Rugged and ergonomic handheld design

## Technical Features:

- **Power supply:** alternatively supplied by standard rechargeable batteries or mains adaptor
- **Hotkeys** for quick start of various tests
- **Power management**, user configurable
- **Keypad:** 16-keys, 2 cursor keys, 3 context-specific softkeys
- **LC display:** 4 lines with 16 characters, backlit
- **5 LEDs** to indicate status (ADSL layer 1, 2, 3, PC trace and line power)
- **CE marked:** complies with CE directives
- **User safety:** fulfills EN 60950-1:2006-11
- **RoHS** conformance according to WEEE directive

## Interfaces:

- **RJ-45** line input for ADSL and Ethernet
- **Ethernet** 10/100 Base-T (Bridge)
- **RJ-11** serial interface

## Environmental conditions:

- **operating temperature:** 0 °C (+32 °F) up to +50 °C (+122 °F)
- **storing temperature:** -15 °C (5 °F) up to +70 °C (+158 °F)
- **relative humidity:** up to 95%, non-condensing

## Dimensions:

- **Size:** H x B x T: 229 x 72 x 35 mm (9.02 x 2.84 x 1.38 in)
- **Weight:** approx. 395g (0.87 lbs)

## Standard package:

Tester incl. rechargeable batteries, plug-in power supply, quick guide, cable set for ADSL and RJ45 Ethernet patch cable.

## Basic packages:

**ARGUS 42 basic ADSL Annex A + M**

Order number: 104302

**ARGUS 42 basic ADSL Annex B + J**

Order number: 104332

**ARGUS 42 basic ADSL Annex A + B + J + M**

Order number: 104352



## \* Options:

**ADSL Annex A + M (add. SW option)**

Order number: 004305

**ADSL Annex B + J (add. SW option)**

Order number: 004306

## \* Additional features:

**ARGUS car charger, type 1**

Order number: 000056

**ARGUS Carrying case**

Order number: 007001

**ARGUS carrying hook**

Order number: 000009

**ARGUS carrying strap**

Order number: 000012

## Additional PC software:

(for Windows operating systems)

**ARGUS WINplus**

Order number: 010005

\* We would be glad to provide further details and information about additional accessories on request.

**intec**

GESELLSCHAFT FÜR  
INFORMATIONSTECHNIK mbH

Rahmedestraße 90  
D-58507 Lüdenscheid

Tel: +49 2351 9070-0  
Fax: +49 2351 9070-70

E-Mail: [sales@argus.info](mailto:sales@argus.info)  
Internet: [www.argus.info](http://www.argus.info)